

Installation and Instruction Manual For Dodge® TORQUE-ARM II™ Vertical Breather Kit

TA0 – TA3 and TA4 – TA12

WARNING: Because of the possible danger to person(s) or property from accidents which may result from the improper use of products, it is important that correct procedures be followed. Products must be used in accordance with the engineering information specified in the catalog. Proper installation, maintenance and operation procedures must be observed. The instructions in the instruction manuals must be followed. Inspections should be made as necessary to assure safe operation under prevailing conditions. Proper guards and other suitable safety devices or procedures, as may be desirable, or as may be specified in safety codes should be provided, and are neither provided by Baldor Electric Company, nor are the responsibility of Baldor Electric Company. This unit and its associated equipment must be installed, adjusted and maintained by qualified personnel who are familiar with the construction and operation of all equipment in the system and the potential hazards involved. When risks to persons or property may be involved, a holding device must be an integral part of the driven equipment beyond the speed reducer output shaft.

www.baldor.com www.ptplace.com www.dodge-pt.com www.reliance.com



Baldor Electric Company Headquarters

P.O. Box 2400, Fort Smith, AR 72902-2400 U.S.A., Ph: (1) 479.648.5792, Fax (1) 479.648.5792, International Fax (1) 479.648.5895

DODGE/Reliance Division

6040 Ponders Court, Greenville, SC 29615-4617 U.S.A., Ph: (1) 864.297.4800, FAX: (1) 864.281.2433

IM499387 04/07-1M-K Copyright © 2007 Baldor Electric Company All Rights Reserved. Printed in USA.

This material is not intended to provide operational instructions. Appropriate instruction manuals and precautions should be studied prior to installation, operation or maintenance of equipment.

INSTALLATION

WARNING: To ensure that drive is not unexpectedly started, turn off and lock out or tag power source before proceeding. Remove all external loads from drive before removing or servicing drive or accessories. Failure to observe these precautions could result in bodily injury.

Where space constraints prevent installing the breather in vent locations 5 for Position E or location 6 for Position F (see Figure 1), install vertical breather kit in location 2 for Position E or location 4 for Position F.

Figure 1-Reducer Mounting Positions

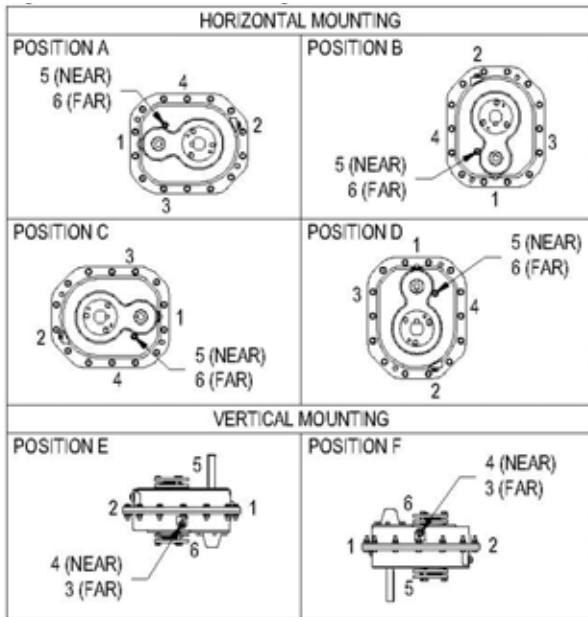
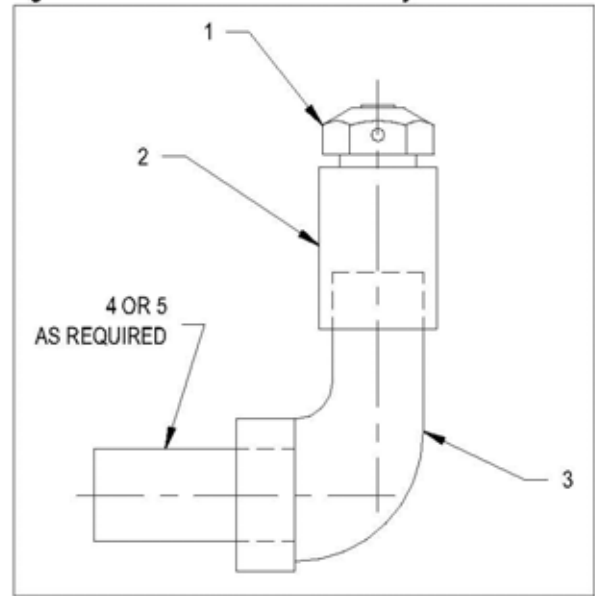


Figure 2 – Vertical Breather Kit Assembly



Refer to Table 1 for Dodge replacement part numbers and part descriptions.

Table 1-Parts for Vertical Breather Kit

Ref. No*	Part Description	Part No.	Qty.	
			TA0-TA3 (900112)	TA4-TA12 (904112)
1	Air Vent Assembly TAO - TA3	241237	1	---
	Air Vent Assembly TA4 TA12	245237	---	1
2	3/8 Pipe Coupling	A31484	1	---
	1/2 Pipe Coupling	A45622	---	1
3	3/8 x 90° Street Ell	A38815	1	---
	1/2 x 90° Street Ell	A38817	---	1
4**	3/8 x 1 1/2 Pipe Nipple	A38847	1	---
	1/2 x 1 1/2 Pipe Nipple	A38845	---	1
5**	3/8 x 3 Pipe Nipple	A31570	1	---
	1/2 x 3 Pipe Nipple	304596	---	1
6***	3/4 x 1/2 Hex Bushing	430079	---	1

* Refer to Figure 2.

** Two lengths of pipe nipple are provided. Only one is required. Use length best suited to application and discard the other.

*** Not shown. This part is used only on TA4 – TA12 reducers to adapt 3/4 NPT hole to 1/2 pipe nipple.